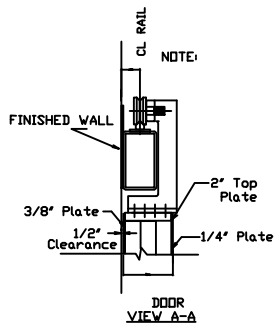
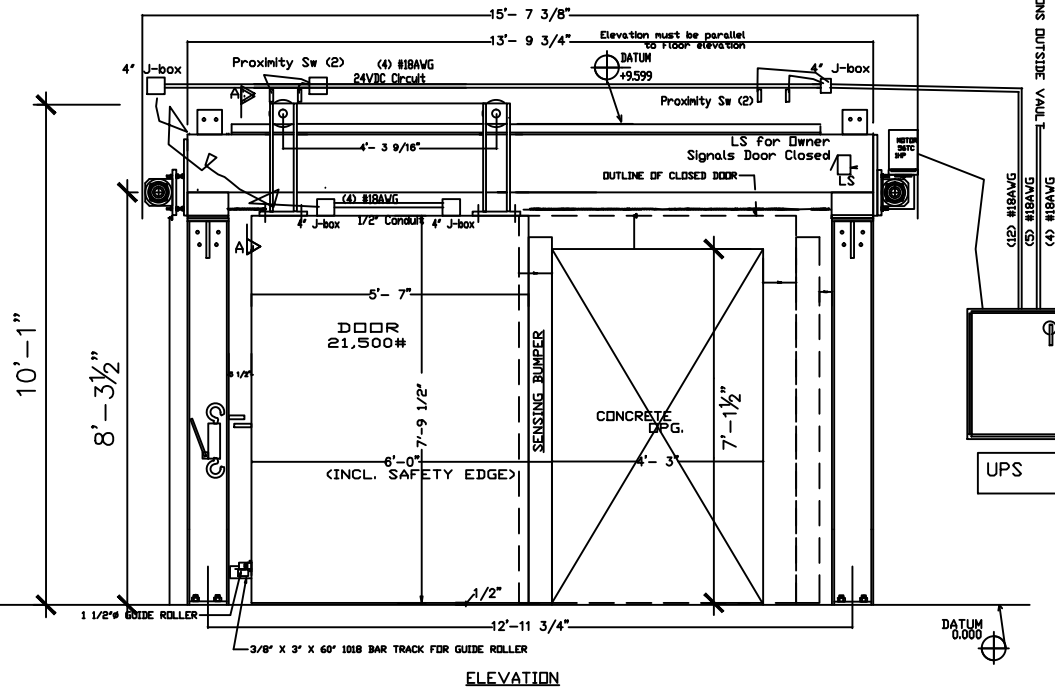


1. POWER FAILURE- A battery powered UPS will provide power to open door on power failure. In case of malfunction in battery operation the door may be operated manually. The ratchet puller may be used to assist opening.
2. DOOR OBSTRUCTED- If the door is Closing when the obstruction occurs the door will Stop then reverse and Open.
3. PRESENCE SENSOR AT BOTH ENTRANCE AND EXIT



FOR DETAIL



- NOTES:
- 1: THIS DRAWING MUST BE APPROVED BY THE PHYSICIST OF RECORD
  - 2: SHIELDING MUST BE VERIFIED BY THE PHYSICIST OF RECORD
  - 3: PITTS LITTLE CORPORATION WILL BUILD THE DOOR TO THIS APPROVED DRAWING
  - 4: PITTS LITTLE CORPORATION IS NOT RESPONSIBLE FOR THE CONCRETE WALL
  - 5: THE CONCRETE WALL AROUND THE DOOR MUST BE SMOOTH, LEVEL AND PLUMB IN ALL DIRECTIONS
  - 6: THE FLOOR AREA AROUND THE DOOR MUST BE LEVEL
  - 7: THE PHYSICIST / CONTRACTOR IS TO CERTIFY THAT THE SITE IS READY FOR INSTALLATION OF THE DOOR
  - 8: ACCESS MUST BE PROVIDED TO THE IDLER END FOR SERVICE OF THE DOOR AND OPERATION OF THE MANUAL OPENING DEVICE.
  - 9: ACCESS MUST BE PROVIDED TO THE IDLER END FOR SERVICE OF THE DOOR AND ACCESS TO THE CONTROL PANEL.

- NOTE: 1: Fused 120VAC 60Hz Single Phase 20Amp Service required  
2: Contractor to furnish and install all conduit and wiring

	2711 ALTON ROAD Birmingham, AL 35210 Phone: 205-833-5911 Fax: 205-833-5912
	DRAWN BY: _____ SCALE: _____
APPROVED BY: _____	DATE: _____
Name - Project Number	
City, State	

NOTE: PHYSICIST OF RECORD AND STRUCTURAL ENGINEER SHALL REVIEW DRAWING PRIOR TO PROCEEDING WITH THE WORK.