

## Lead Lined Drywall

Gypsum drywall panels meet or exceed ASTM C1396 and ASTM C840. Gypsum drywall panels are pressure laminated with a permanent adhesive to unpierced sheet lead and arranged to provide effective lead shielding through all joints. Gypsum board panels are secured to studs with drywall screws. Leaded drywall panels will be greater than or equal to the attenuation level specified by a health physicist. In addition to drywall, Pitts Little can apply lead to mold and moisture resistant wallboard as well.

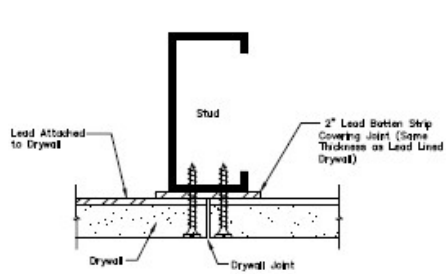
### Standard Installation:

- Place leaded side of drywall against studs.
- Drill pilot holes for screws to prevent deformation of lead.
- A minimum lead overlap of one inch is required at all joints and corners.
- Extend lead overhang at least one inch into all frames or openings.
- Fasten lead lined drywall to studs with screws placed a maximum of eight inches on center.
- Install sheet lead over or behind all penetrations, cuts, or punctures to ensure continuity of radiation shielding.

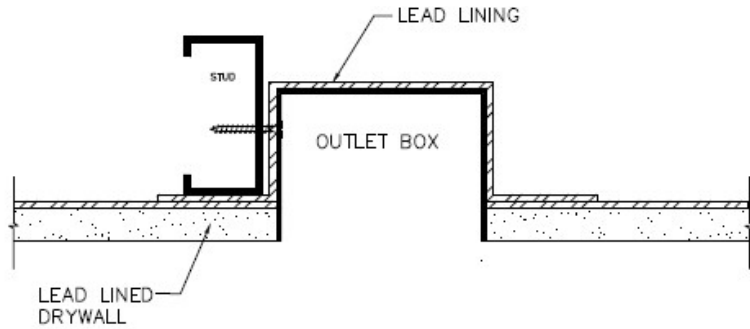
Dry wall can be taped, floated and finished as required. Protect installed materials from damage by other construction. Have shielding tested by approved personnel. Shielding must comply with all federal and state regulations.

Note: For lead thickness up to 5/64" (5#), a one inch lead overhang extends off one side of the leaded drywall to serve as a batten strip. If lead thickness exceeds 5/64" (5#), a two inch lead batten strip will be supplied for each piece of lead lined drywall. Batten strips are required at all drywall joints.

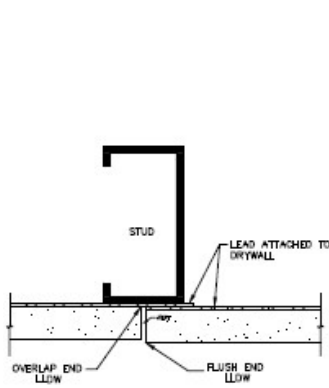
## Typical Details for Lead Lined Drywall:



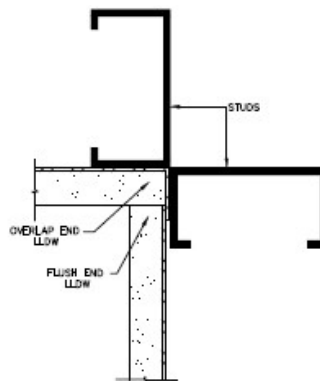
TYPICAL JOINT  
DETAIL  
WITH BATTEN



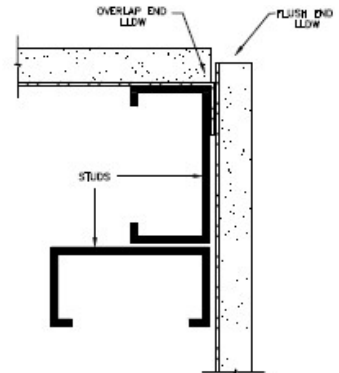
LEAD FOR OUTLET BOXES AND  
SWITCH BOXES



LEAD OVERLAP



LEAD INSIDE  
CORNER



LEAD OUTSIDE  
CORNER



# Sheet Lead

Sheet lead meets or exceeds Federal Specification QQ-L-201 and ASTM B749.

Pitts Little sheet lead is ideal for radiation protection as well as sound and water proofing applications. Our lead is 99.5% or more pure and is milled to required specifications. It is available in widths up to eight feet, lengths up to 25 feet, and any required thickness.

## Sheet Lead Thickness Chart

POUNDS PER SQ. FT.	ACTUAL THICKNESS	APP. THICKNESS IN INCHES		APP. THICKNESS IN MILLIMETERS
		DECIMAL	FRACTION	
1		.0158	$\frac{1}{64}$	0.397
2		.0312	$\frac{1}{32}$	0.794
2 1/2		.0391	$\frac{5}{126}$	1.000
3		.0468	$\frac{3}{64}$	1.191
3 1/2		.0547	$\frac{7}{128}$	1.390
4		.0625	$\frac{1}{16}$	1.587
5		.0781	$\frac{5}{64}$	1.980
6		.0937	$\frac{3}{32}$	2.381
8		.1250	$\frac{1}{8}$	3.175
10		.1563	$\frac{5}{32}$	3.969
12		.1857	$\frac{3}{16}$	4.763
14		.2188	$\frac{7}{32}$	5.558
15		.2500	$\frac{1}{4}$	6.350
20		.3333	$\frac{1}{3}$	8.500
24		.40000	$\frac{2}{5}$	10.100
30		.5000	$\frac{1}{2}$	12.700
40		.6667	$\frac{2}{3}$	16.900
60		1.000	1"	25.400

## NCPR REPORT 147

Structural Shielding Designs for Medical X-Ray Imaging Facilities

*Recommendations of the*

**NATIONAL COUNCIL ON RADIATION PROTECTION AND MEASUREMENTS**

*Issued November 19, 2004 / Revised March 18, 2005*

## **2.3 Shielding Design Elements**

### **2.3.1.1 *Sheet Lead***

(Paragraph 2)

For typical shielding applications, a lead sheet is glued to a sheet of gypsum wallboard and installed lead inward with nails or screws on wooden or metal studs. X-ray images of wall segments show that insertion of the nails or screws does not result in significant radiation leaks<sup>7</sup>. In fact, the steel nails or screws generally attenuate radiation equally, or more effectively, than the lead displaced by the nails.

**Therefore, steel nails or screws used to secure lead barriers need not be covered with lead discs or supplementary lead.** However, where the edges of two lead sheets meet, the continuity of the shielding *shall* be ensured at the joints (Section 2.4.2)